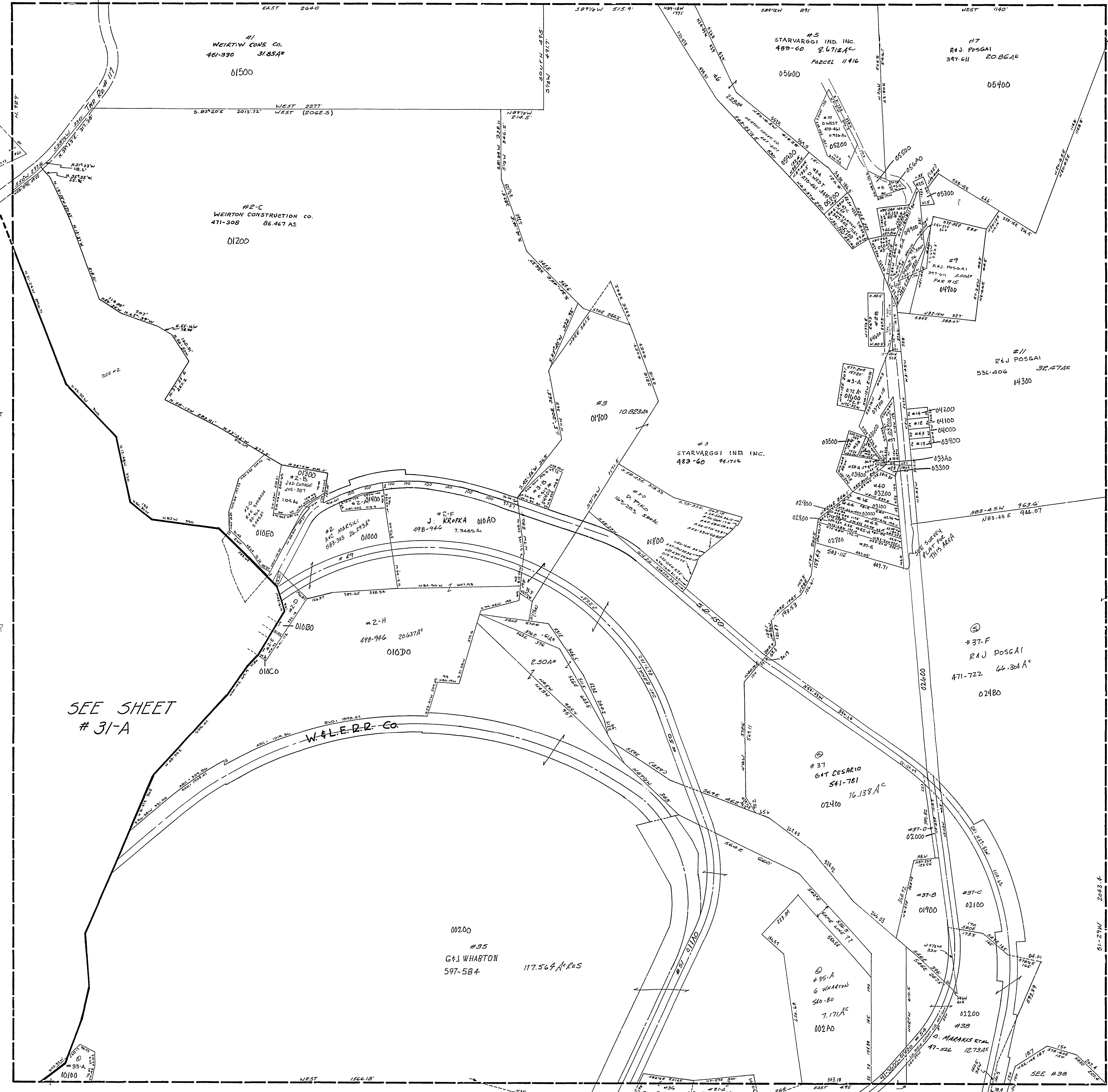


SPLIT FROM #5 LOCATION?
 #5-D 24J POSGAI 392.44 8.16A
 CANNOT LOCATE UNTIL NEW SURVEY TELLS
 US EXACTLY WHERE IT IS.

#5-A	STARVAGGI IND.	489-60	1.20 A.
#5-D	L. KISS ETAL	26-75	0.0098A
#2-E	R. KENDA ETAL	374-44	.153 A.
#2-D	J. J. SPEARS	636-70	.544 A.
#3-A	E. J. HANCOCK	487-340	.72 A.
#3-B	M. M. ANDZEJCZYK	136-19	.517A
#5-B	M. J. MICHAEL	240-703	.355A
#5-C	"	"	.371A
#8	L. KISS ETAL	26-75	.20A
#40	N. OGDEN	408-510	.50A
#44	R. HEDGECOCK	407-25	.12A
#42	N. F. DEMATE	157-599	.03A
#23	E. R. LOVIN	480-285	.07A
#25	G. G. EIGER ETAL	101-845	.31A
#10	C. L. STANGLE	6-23-266	.28A
#13	E. BARBICZ	573-265	.12A
#12	W. C. PADDEN	9-633	.12A
#5E	WEIRTON CONST. CO.	428-107	3.00A
#54	E. J. F. LEE	408-117	.85A
#53	SAME	"	.02A 3 RD PAR.
#15	SAME	"	1.39A 5 TH PAR.
#19	WEIRTON CONST. CO.	428-107	.19A
#22	WEIRTON CONST. CO.	428-107	.12A
#25	E. J. F. LEE	408-117	.04A CANT LOCATE
#56	SAME	"	.31A 4 TH PAR.
#57	M. M. OGDEN	471-156	.51A
#43	A. J. HODGE	231-366	.12A
#16	M. A. P. PRABHUSAI	499-383	.29A
#49	H. MOORE & P. KIDD	409-234	.11A
#51	"	"	"
#51	N. Y. C. R. CO.	72-540	2.56A
#47	M. WALKER	137-222	.60A
#41	SAME	137-222	.55A
#42	SAME	137-222	2.55A
#43	SAME	137-222	.50A
#37-A	E. C. PEE	458-117	2.27A 17 TH PAR.
#37-B	WEIRTON CONST. CO.	428-107	2.27A
#37-C	WEIRTON CONST. CO.	428-107	2.27A
#37-D	WEIRTON CONST. CO.	428-107	1.22A
#38-B	J. SEMBORSKI	556-256	.02A
#44	L. DUKESKI	52-282	.32A
#45	P. JACOBSON	352-304	.38A
#45-A	R. S. LOLLINI	528-301	.49A
#37-E	"	"	"
#2-A	D. T. BANAL	635-705	.40A
#38	J. SEMBORSKI	601-403	.25A
#38-A	M. PAPP	231-476	.25A
#39-A	M. ZITZAL	404-441	2.03A
#20	E. V. PASCO	487-340	.50A
#2-A	L. R. DELUCA	378-145	2.29A LOCATION?
#58-C	J. SEMBORSKI	556-256	.015 A
#11-A	M. ANDER	311-7	.11 A
#47	JEFF O. DUM	11-254	0.125A
#60	REL. CLARSON	237-549	0.077A



SEE SHEET
 # 31-A

WARREN TWP.
 SEC. 31, T. 5, R. 2.
 SCALE: 1" = 200'

HI-3100-